

ALTERNATIVE TRANSPORTATION OPTIONS IN HELENA

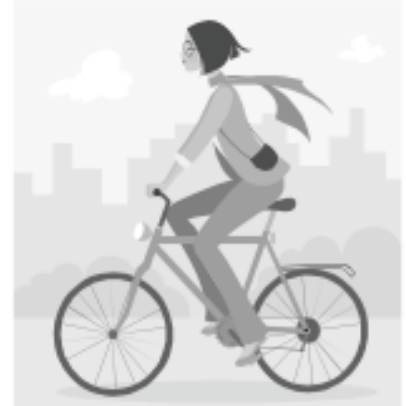
COMMUTING BY BICYCLE

Bikes are often thought of as a childhood toy or an exciting activity for the weekends, but they can easily be a part of your daily life. They're not only better for the environment than a car, they're good for you too!

Using a bike to get around town is an easy way to add exercise to your daily routine. It also guarantees parking close to your destination as well as decreasing the amount of money spent on gas, parking permits, and other car-related expenses.

Commuting by bike might seem like a daunting task, but if you talk to other bicycle commuters, stop into a local bike shop, or read up about it online, you will find that it is actually quite easy to make the switch from a car to a bike.

If you are interested in getting started, there are plenty of resources available online with information on how to begin commuting by bike. A great source is Paul Dorn's Bike Commuting Tips, which can be found online at <http://www.runmuki.com/commute/>. To find out more information about biking in Helena, check out <http://www.ci.helena.mt.us/> and search for BikeWalk.



HELENA AREA TRANSIT SERVICE (HATS)

Many people are not aware of the transportation services offered by the City. The trolley is the most well-known option, but they have several other options for commuters such as the Checkpoint Bus, East Valley Bus, Capital Commuter Bus, and the Curb-to-Curb bus.

All of these options decrease your individual carbon footprint while still getting you around town. To find out more information about these options provided by the city of Helena, check out their website at www.ci.helena.mt.us.

NEIGHBORHOOD ELECTRIC VEHICLES

Neighborhood Electric Vehicles (NEVs) are battery-powered vehicles that can legally be driven on streets as "slow-speed electric vehicles." These electric vehicles come equipped with safety features such as solid doors, windshield wipers, and headlights, making them legal to drive on roads with speed limits up to 35 mph.

These vehicles are ideal for commuting within the city. Their small size makes them easy to park in small parking spots and their lack of a tailpipe eliminates the harmful air pollutants emitted by other vehicles. Their range of 40 to 60 miles on a full charge also means that you can do your daily commute while only having to charge the vehicle for 7 to 8 hours.

To find out more information about NEVs or to get one of your own, check out Eco Auto Inc. at <http://www.ecoautoinc.com/>.

